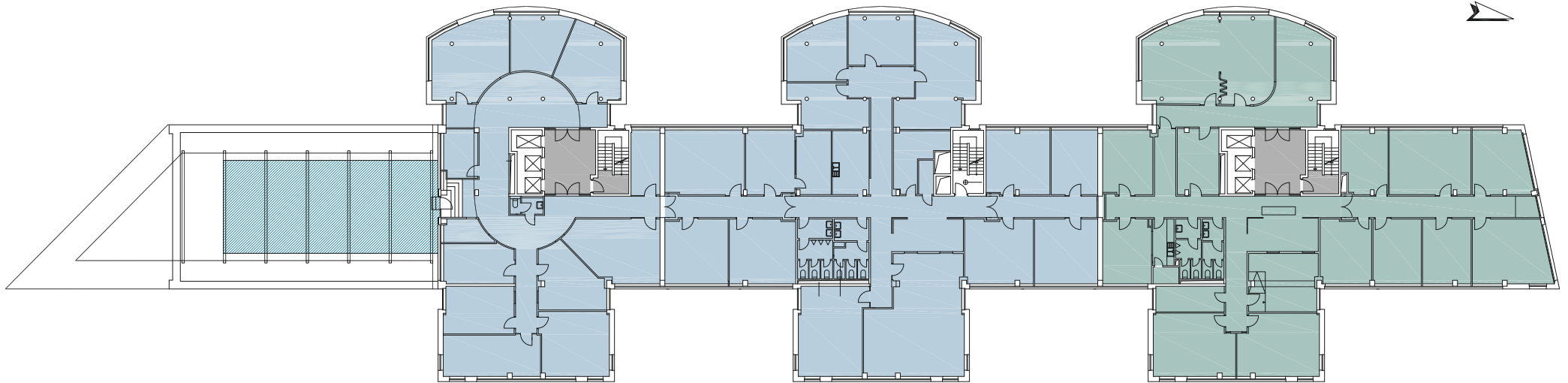





GRUNDRISS - 4. OBERGESCHOSS

BÜRODECK BAHRENFELD // Notkestraße 9-11 // 22607 Hamburg // www.bueroeckbahrenfeld.de



MIETFLÄCHEN

	1120,86 m ²
	660,49 m ²
	57,17 m ²

LAGEPLANSKIZZE

